



## ***2009 International Building Code Adds Photoluminescent Egress Markings Requirement for All New and Existing High Rise Buildings***

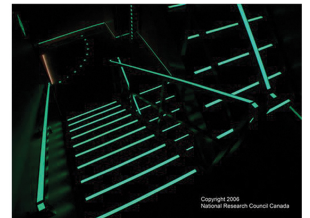
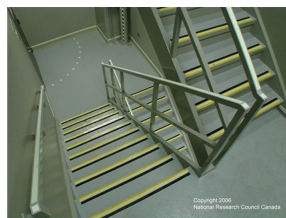
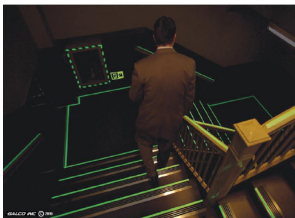
The International Code Council adopted into the 2009 International Building Code Section 1024 and International Fire Code, 4604.23, mandating that all non-residential buildings, **new and existing**, over 75 feet in height must install Photoluminescent Exit Path Markings in all enclosed emergency stairwells.

The International Building Code, published every three years, is in use in every state in the United States of America. Most states are in the process of adopting the 2009 I-codes into their jurisdictions. For the latest information on your state's position in the code adoption process, visit the [ICC website](#) and go to **International Codes and Standards Adoption** to see what's new in your state.

Other building codes now require Photoluminescent Exit Path Markings:

- 2009 NFPA 101—Life Safety Code and NFPA 5000 Building Construction and Safety Code Section 7.2.2.5.5 Exit Stair Path Markings. Effective January 2009.

- State of California Building Code, Chapter 10, Means of Egress requirement in newly constructed Group A, E, I, R-1, R-2, and R-4 Occupancies: Path Marking in interior corridors leading to Emergency Exit. Effective January 2008.
- State of Connecticut requirement in newly constructed in Group A, B, E, I-1, I-2, R-1, and R-2 occupancies: Floor proximity Egress Path Markings in Exit Access corridors leading to Emergency Exit stairwells. Effective January 2008.
- New York City Reference Standard RS 6-1 and 2008 New York City Building Code requirement in all enclosed Emergency Exit stairwells. Effective July 2008 for all nonresidential structures.
- General Services Administration PBS P-100, Section 7.8, requires Photoluminescent Exit Path Markings in all new and altered buildings. Effective March 2005.
- Section 1011.4 of the 2006 International Building Code allows energy-saving Photoluminescent Exit Signs meeting UL 924 in all buildings.



**[For More Information on PL Products,  
Click Here to Visit the PSA Website  
www.plsafety.org](#)**